

Load Cell Central

1-800-LOADCEL

Single Ended Shear Beam Load Cell

Model: LCS9

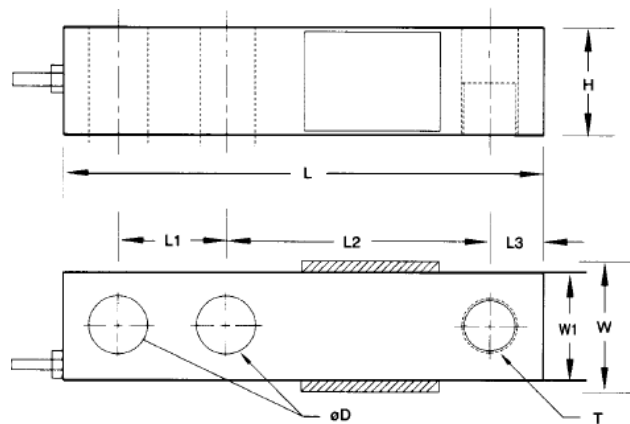
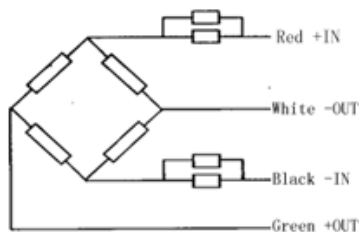
Ranges from 1,000 to 10,000 lbs.



The LCS9 load cell is designed for multiple load cell applications such as industrial floor scales, barrel scales, or medium and low capacity vessel weighing applications. The LCS9 is constructed of a nickel plated high alloy tool steel and fully potted to IP65 to protect from water and moisture damage, also available in stainless steel. When used with our Duramount 3E mounting assembly the LCS9 is the ideal choice for vessel weighing and batching systems.

Capacities: 1K, 2K, 2.5K, 4K, 5K, 10K lb.

ELECTRICAL CONNECTION:



Capacity		L	L1	L2	L3	W	W1	H	D	T
1K, 2K, 2.5K, 4K lb	(inch)	5.12	1.00	3.00	0.50	1.34	1.25	1.25	0.53	1/2-20UNF
5K, 10K lb	(inch)	6.75	1.50	3.75	0.75	1.57	1.50	1.50	0.78	3/4-16UNF

Specifications:

Combined Error:	0.02% FS	Zero Balance:	1.0% FS
Rated Output:	3.0 +/- 0.1 mV/V	Temp. Effect on Output:	0.02% FS/10°C
Non-Linearity:	0.02% FS	Temp. Effect on Zero:	0.02% FS/10°C
Hysteresis:	0.02% FS	Compensated Temp.:	-10 to 40°C
Non-Repeatability:	0.01% FS	Operating Temp.:	-35 to 65°C
Creep (%FS/30min.)	0.02	Recommended Excitation:	10Vdc
Input Resistance:	350 +/- 3Ω	Safe Overload:	150% FS
Output Resistance:	350 +/- 3Ω	Ultimate Overload:	200% FS
Insulation Resistance MΩ:	≥5,000 (50Vdc)	Cable Length: 1K to 4K lb.	13.1' (4 meters)
		5K & 10K lb.	19.6' (6 meters)

Load Cell Central
216 Main St. / PO Box 91
Monroeton, PA 18832
Web: www.800loadcel.com

Toll Free: 1-800-562-3235
Ph: 1-570-265-5015
Fax: 1-570-265-5148
Email: sales@800loadcel.com